

**MTX2 Antibody (Center)**  
**Purified Rabbit Polyclonal Antibody (Pab)**  
**Catalog # AP20787c****Specification**

---

**MTX2 Antibody (Center) - Product Information**

Application	WB,E
Primary Accession	<a href="#">O75431</a>
Reactivity	Human
Host	Rabbit
Clonality	Polyclonal
Isotype	Rabbit IgG
Calculated MW	29763

**MTX2 Antibody (Center) - Additional Information****Gene ID** 10651**Other Names**

Metaxin-2, Mitochondrial outer membrane import complex protein 2, MTX2

**Target/Specificity**

This MTX2 antibody is generated from a rabbit immunized with a KLH conjugated synthetic peptide between 102-126 amino acids from the Central region of human MTX2.

**Dilution**

WB~~1:1000

E~~Use at an assay dependent concentration.

**Format**

Purified polyclonal antibody supplied in PBS with 0.09% (W/V) sodium azide. This antibody is purified through a protein A column, followed by peptide affinity purification.

**Storage**

Maintain refrigerated at 2-8°C for up to 2 weeks. For long term storage store at -20°C in small aliquots to prevent freeze-thaw cycles.

**Precautions**

MTX2 Antibody (Center) is for research use only and not for use in diagnostic or therapeutic procedures.

**MTX2 Antibody (Center) - Protein Information****Name** MTX2**Function** Involved in transport of proteins into the mitochondrion.**Cellular Location**

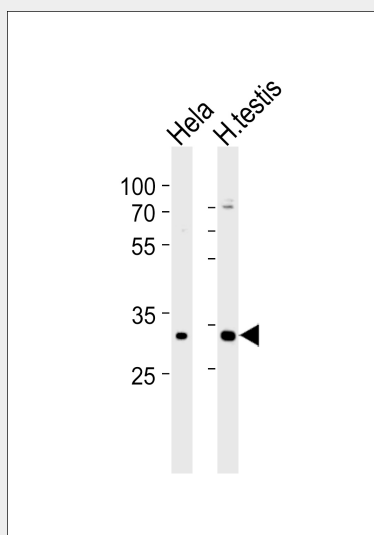
Mitochondrion outer membrane. Mitochondrion

### MTX2 Antibody (Center) - Protocols

Provided below are standard protocols that you may find useful for product applications.

- [Western Blot](#)
- [Blocking Peptides](#)
- [Dot Blot](#)
- [Immunohistochemistry](#)
- [Immunofluorescence](#)
- [Immunoprecipitation](#)
- [Flow Cytometry](#)
- [Cell Culture](#)

### MTX2 Antibody (Center) - Images



Western blot analysis of lysates from Hela cell line human testis tissue lysate(from left to right), using MTX2 Antibody (Center)(Cat. #AP20787c). AP20787c was diluted at 1:1000 at each lane. A goat anti-rabbit IgG H&L(HRP) at 1:5000 dilution was used as the secondary antibody. Lysates at 35ug per lane.

### MTX2 Antibody (Center) - Background

Involved in transport of proteins into the mitochondrion.

### MTX2 Antibody (Center) - References

Armstrong L.C.,et al.J. Cell. Biochem. 74:11-22(1999).  
Ota T.,et al.Nat. Genet. 36:40-45(2004).  
Hillier L.W.,et al.Nature 434:724-731(2005).  
Mural R.J.,et al.Submitted (SEP-2005) to the EMBL/GenBank/DDBJ databases.  
Burkard T.R.,et al.BMC Syst. Biol. 5:17-17(2011).